

**MUNICIPALITY OF LOUISE
ZONING BY LAW AMENDMENT**

BY LAW 2024-19

BEING a By law of the Municipality of Louise to amend the Municipality of Louise's Zoning By law 2022-09 as amended.

WHEREAS, Section 80(1) of The Planning Act gives the Council of a Municipality the power to amend an adopted zoning By law; and

NOW THEREFORE the council of the Municipality of Louise in meeting duly assembled, enacts as follows

That the Municipality of Louise Zoning By law No 2022-09 be amended to re-zone the parcel of land shown outlined in Schedule 'A' as attached and located in:

Lot 1, Plan 40356 and Part of NE ¼ 24-02-12 W in the LUD of Crystal City in the Municipality of Louise

**From 'UH' Urban Hold
To 'MG' General Industrial zone**

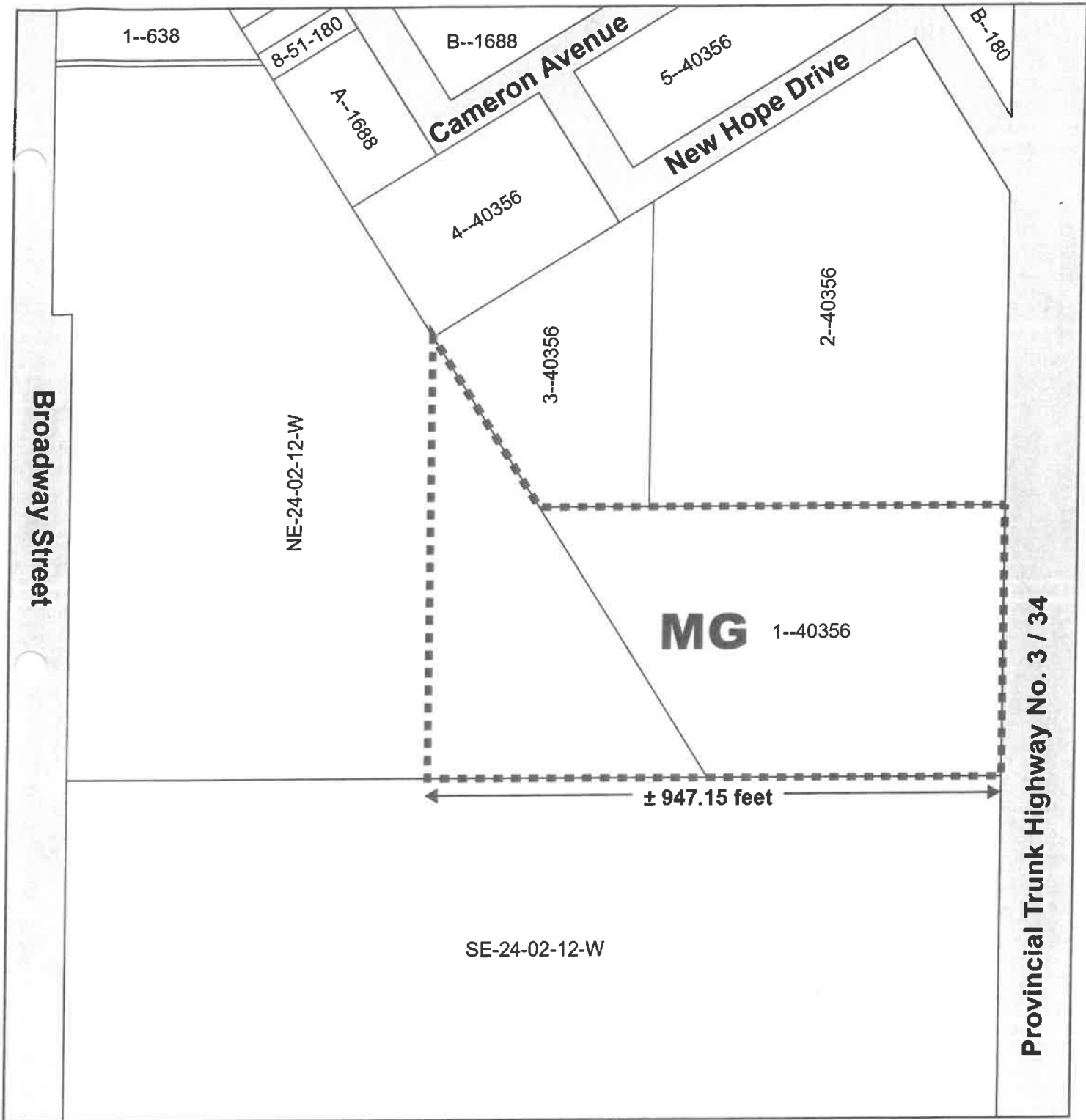
DONE AND PASSED as a By law of the Municipality of Louise in the Province of Manitoba this 4th day of December 2024

MUNICIPALITY OF LOUISE


Reeve


Chief Administrative Officer

Read a first time this 13th day of November 2024
Read a second time this 4th day of December 2024
Read a third time this 4th day of December 2024



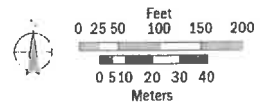
Schedule "A"

Attached to By-Law No. 2024-19 of the Municipality of Louise amending Map 3 of By-Law No. 2022-09 being the Municipality of Louise Zoning By-Law as amended

 Limit of Area Affected

 Survey

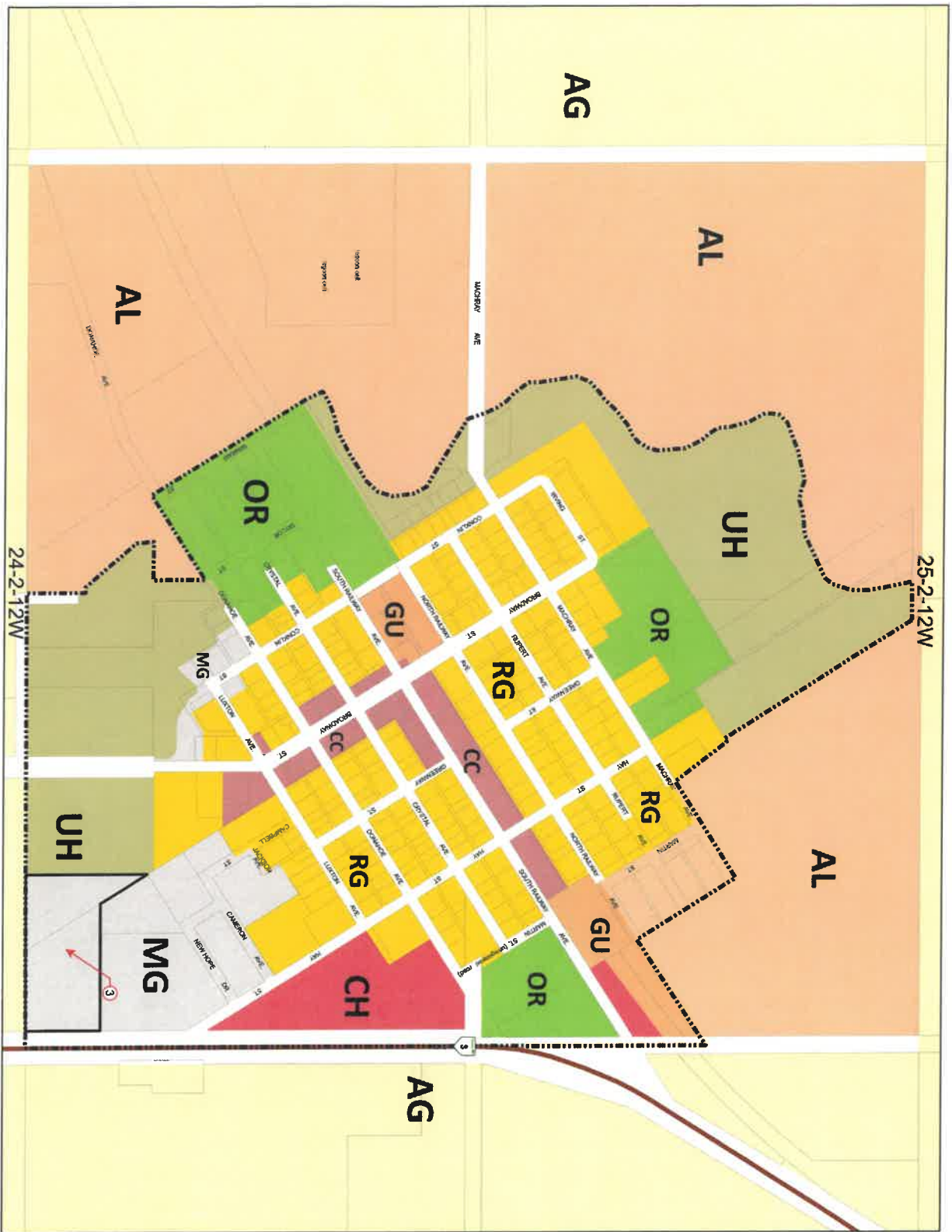
**Lot 1 Plan 40356 MLTO and
Part of NE ¼ 24-2-12 WPM
in LUD of Crystal City
Municipality of Louise**



From: "UH" Urban Hold Zone
To: "MG" General Industrial Zone

Map: 2024-19 Louise
Date: 2024-10-18

Manitoba
Community Planning Branch
Municipal and Northern Relations



Municipality of Louise
Zoning BY-LAW
 No. 2022-09
MAP 3
 Crystal City

OFFICE CONSOLIDATION

No.	ZBIA No.	Change
3	2024-19	UH to MG

- Zones**
- AG - Agricultural General
 - AL - Agriculture Limited
 - CC - Central Commercial
 - MG - General Industrial
 - GU - General Use
 - CH - Highway Commercial
 - OR - Open Space and Recreational
 - RG - Residential General
 - UH - Urban Hold

- Other Features**
- Amended Area
 - Settlement Centre Boundary
 - Provincial Trunk Highway
 - Assessment Parcels

